



Funded by the
European Union



WINTER



polteqor – instytut
INSTYTUT GÓRNICTWA ODKRYWKOWEGO

WINTER "Web INTERactive management tool for coal Regions in transition"

*Dr. Barbara Rogosz, Dr. Jacek Szczepiński,
Aleksandra Szwaja, Dr. Adam Bajcar*



Funded by the
European Union



WINTER



polteqor – instytut
INSTYTUT GÓRNICCTWA ODKRYWKOWEGO

WINTER "Web INTERactive management tool for coal Regions in transition"



Research Fund for Coal and Steel



1.07.2022- 30.06.2024



498 781,50 EUR



Funded by the
European Union



WINTER



polteqor – instytut
INSTYTUT GÓRNICTWA ODKRYWKOWEGO

Reserach Fund for Coal and Steel

- The Research Fund for Coal and Steel is a continuation of research and technical development programs in the field of coal and steel of the European Coal and Steel Community.
- It finances:
 - research projects;
 - pilot and demonstration projects;
 - Accompanying measures
- Priorities:
 - support the just transition of the coal sector and regions;
 - improve health and safety in coal mines under closure and in previously exploited coal mines;
 - minimise the environmental impacts of coal mining sites in transition.





Funded by the
European Union

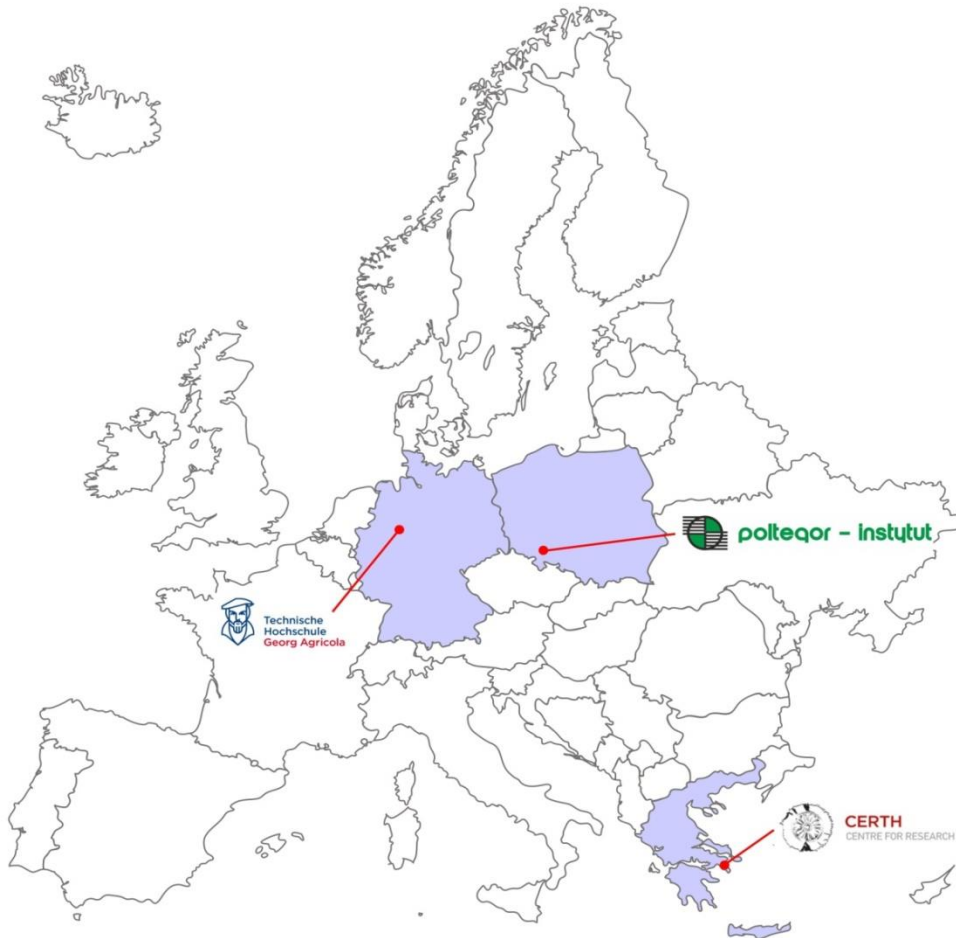


WINTER



poltegor – instytut
INSTYTUT GÓRNICTWA ODKRYWKOWEGO

WINTER project partners



Centre for Research
and Technology Hellas
CERTH



Technische Hochschule
Goerg Agricola University
DMT-THGA



“Poltegor Institute” Institute of
Opencast Mining





Funded by the
European Union



WINTER



polteqor – instytut
INSTYTUT GÓRNICICTWA ODKRYWKOWEGO

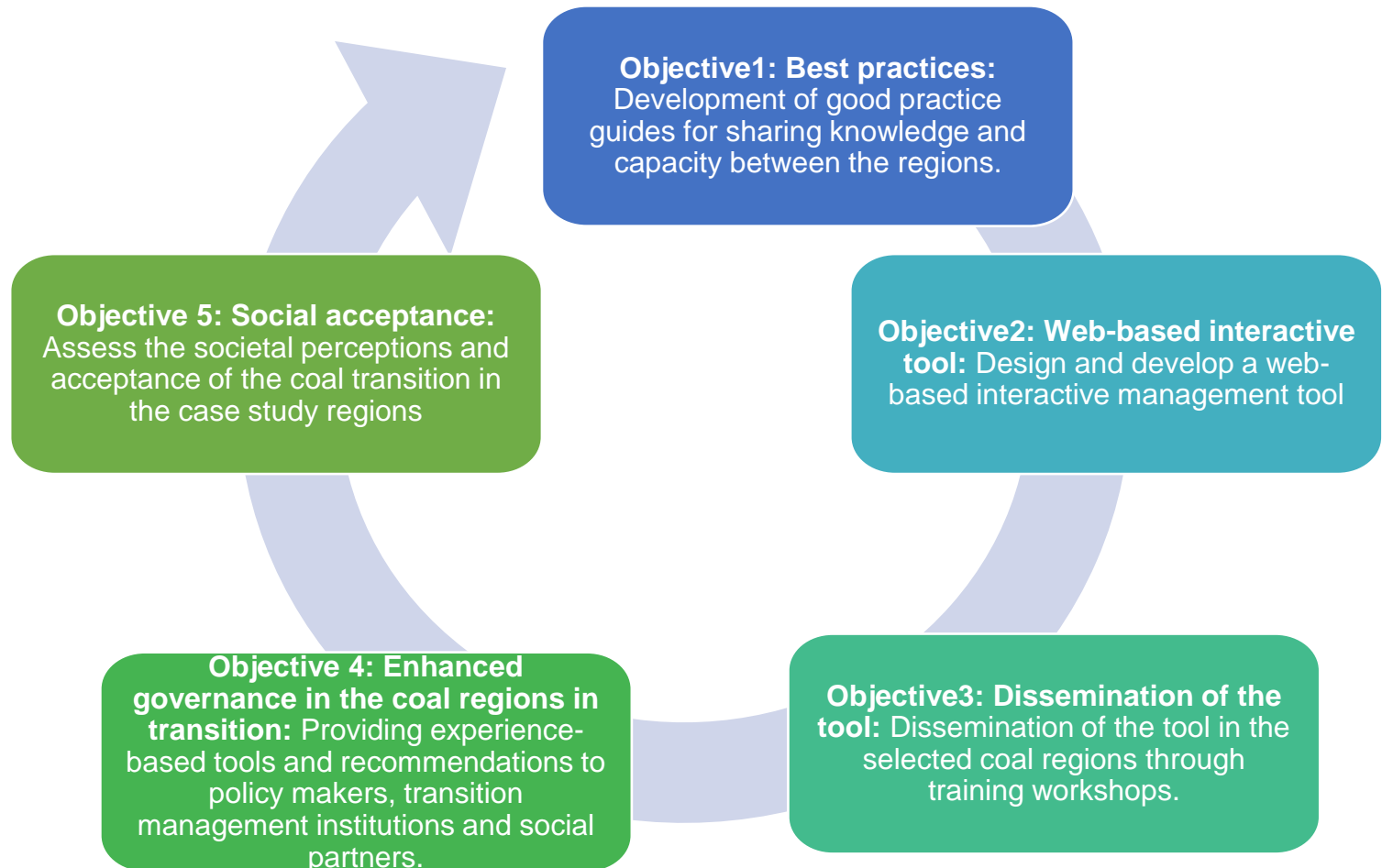


The main goal of the WINTER project

The main objective of the project is to develop an interactive online platform for the effective management of transition in coal regions in transition, providing appropriate guidance and strengthening the involvement of target groups in ongoing change processes.



Specific objectives of the WINTER project





Funded by the
European Union



WINTER



polteqor – instytut
INSTYTUT GÓRNICTWA ODKRYWKOWEGO

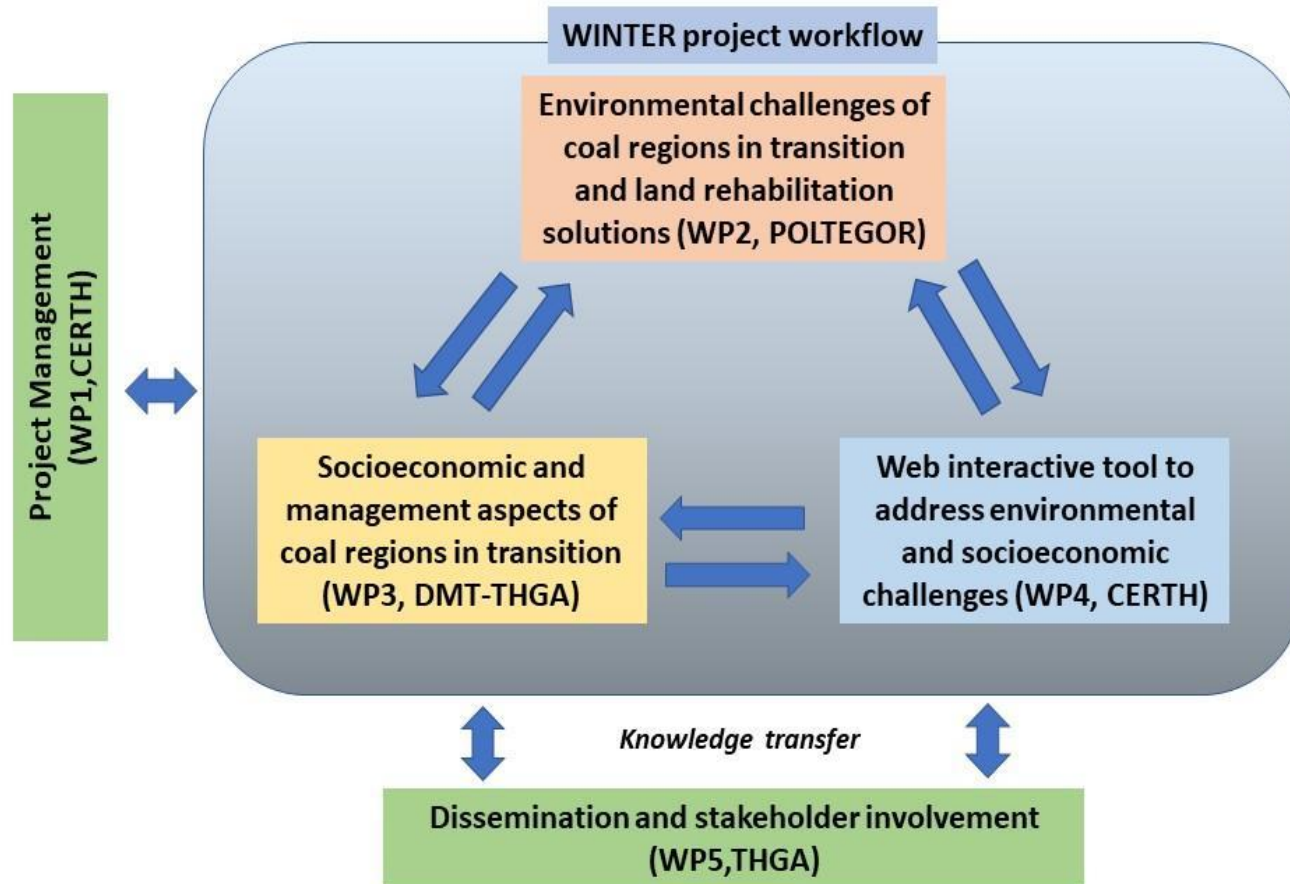
Addressees of the WINTER project



- Local government;
- Decision makers;
- Inhabitants of coal regions in transition;
- Entrepreneurs;
- Units supporting business development (business environment institutions);
- Research units;
- Socio-economic organizations;
- Other units involved in the transformation process.



The structure of the WINTER project





Funded by the
European Union



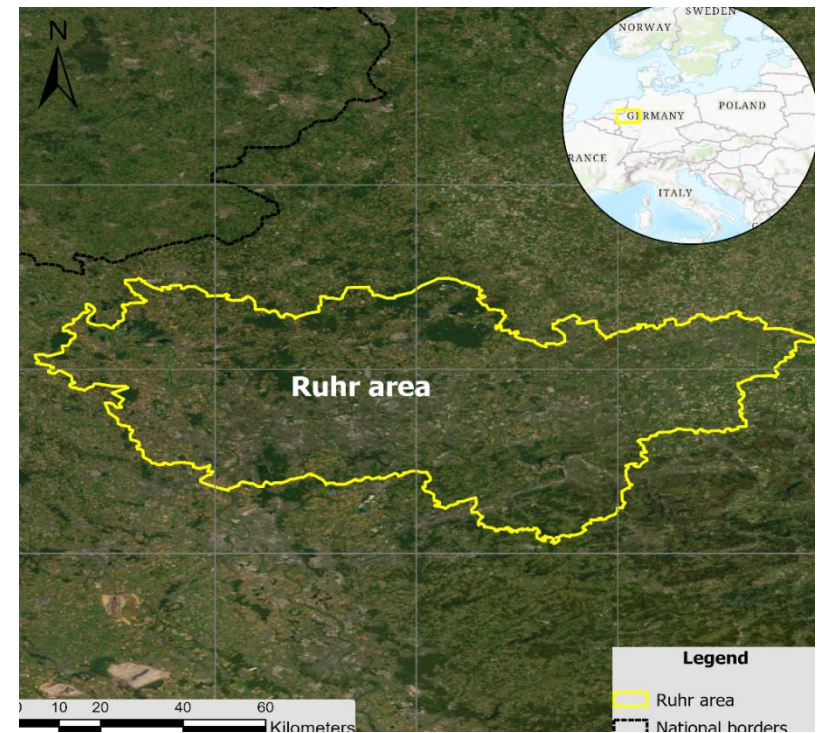
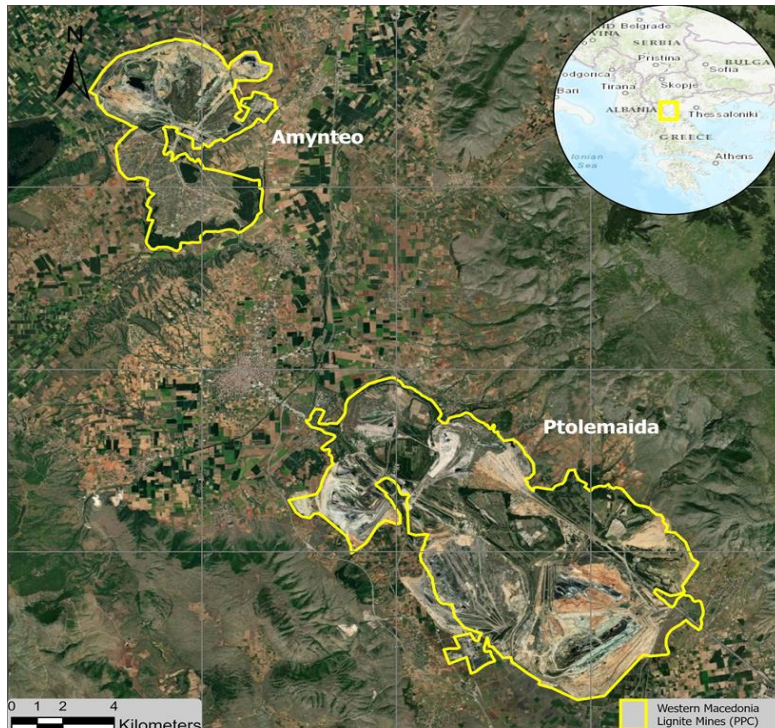
WINTER



polteqor - instytut
INSTYTUT GÓRNICTWA ODKRYWKOWEGO

Pilot areas

The project's key activities are centered around three pilot regions representing different stages of the transformation process - two at an early stage (the region of **Western Macedonia in Greece** and the **Konin region in Poland**) and one representing the mature stage of the transformation (**Ruhr Area in Germany**).





Funded by the
European Union



WINTER



polteqor – instytut
INSTYTUT GÓRNICTWA ODKRYWKOWEGO

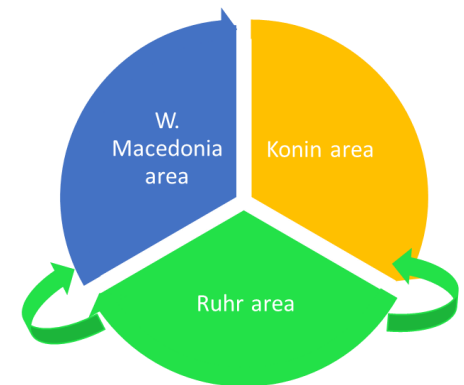
What's new in the WINTER project?

- Development of guidelines in a Transition Management Handbook combining theoretical and empirical knowledge in three regions from three European Union countries at different stages of transition..
- Development of an interactive management tool enabling the dissemination of best practices with the possibility of their adaptation to the needs of other post-coal regions.
- Implementation of a holistic approach to managing transformation challenges.

the transition process will be enhanced

- the dissemination of the web-based tool
- The interaction through the web-platform
- best practices identified for the specific area

“mirror” of the transformation strategies





Funded by the
European Union



WINTER



polteqor – instytut
INSTYTUT GÓRNICTWA ODKRYWKOWEGO

Environmental challenges of coal regions in transition and land rehabilitation solutions

- indication of environmental aspects of reclamation of post-mining areas;
- identification of the main environmental challenges related to land reclamation in selected coal regions;
- collection of existing experience in the management of post-mining regions and the best use of available reclamation technologies;
- analysis of legal regulations applicable in individual countries and in the European Union regarding reclamation;
- presentation of the best and worst practices for the reclamation of post-mining areas.



Funded by the
European Union



polteqor – instytut
INSTYTUT GÓRNICICTWA ODKRYWKOWEGO

Socioeconomic and management aspects of coal regions in transition

- Analysis of transformation management processes to determine the best and improper management strategies and implemented practices, and to indicate their impact on post-coal development.
- Explore the socio-economic parameters of the coal transition by systematically collecting data from pilot regions to assess the socio-economic impacts of the coal transition and develop appropriate management strategies.
- Propose best practices and structures for managing areas in transition by developing a Transition Management Handbook presenting experiences, lessons learned and recommendations for governance, institutional structures and implementation as well as community public participation.



Funded by the
European Union



WINTER



polteqor – instytut
INSTYTUT GÓRNICTWA ODKRYWKOWEGO

Web based interactive tool to address environmental and socioeconomic challenges

- Integration of the results of the project's work into one interactive platform aimed at facilitating the transformation process for local authorities and stakeholders;
- Visualization of transformation scenarios developed for selected pilot areas;
- Possibilities of developing pilot areas for various purposes, including the production of energy from renewable sources, were presented;
- Designing the tool properly in order to be extended to other areas facing similar issues.



Funded by the
European Union

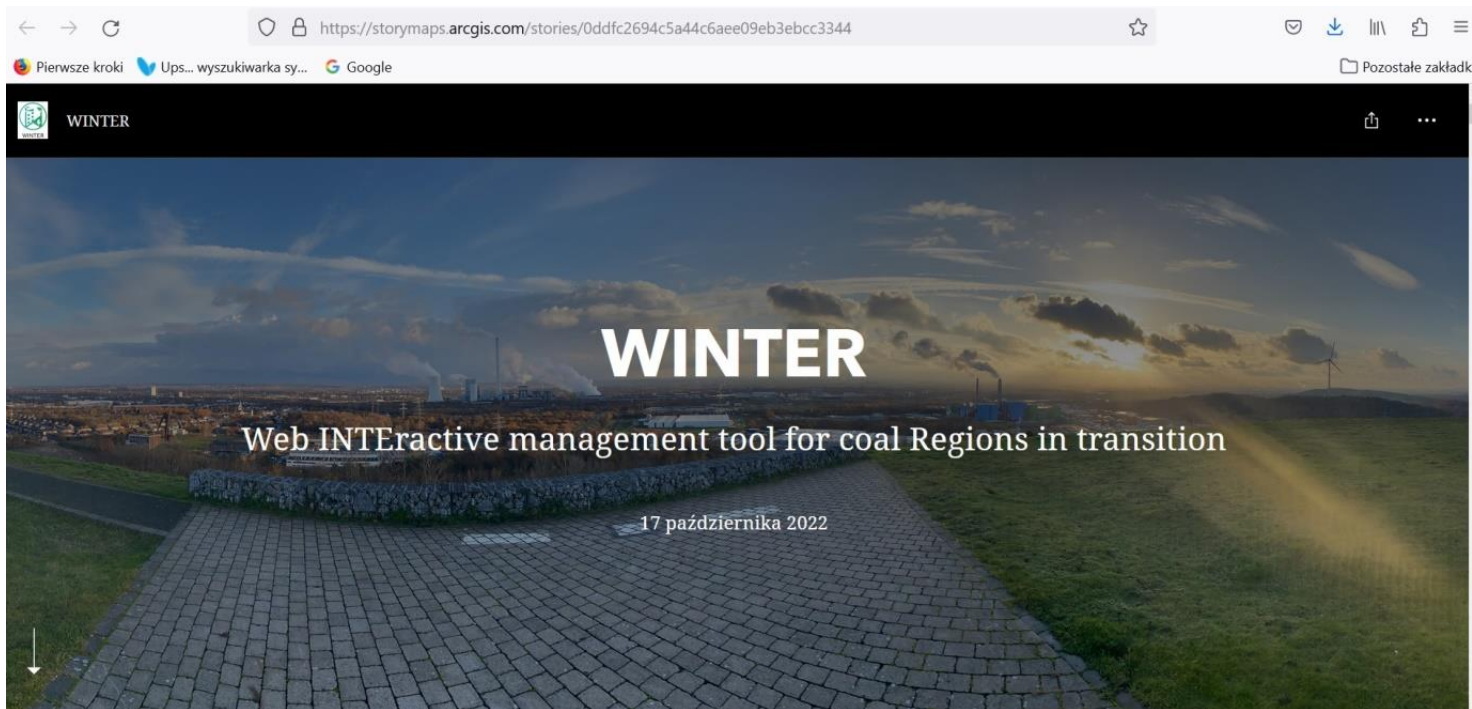


WINTER



polteqor – instytut
INSTYTUT GÓRNICTWA ODKRYWKOWEGO

An interactive online tool responding to environmental and socio-economic challenges



Home page of the web platform



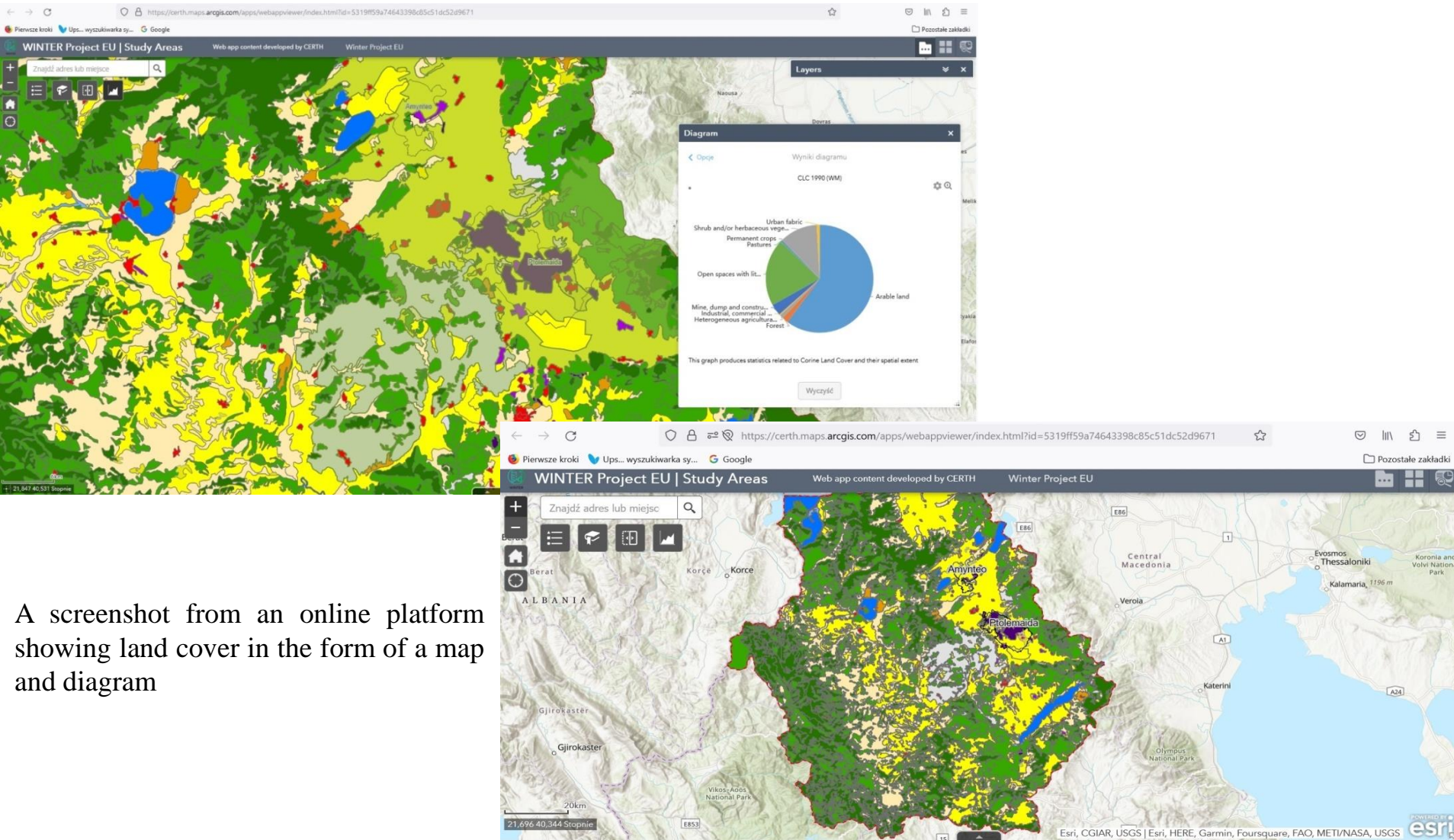
Funded by the
European Union



WINTER



polteqor – instytut
INSTYTUT GÓRNICTWA ODKRYWKOWEGO



A screenshot from an online platform showing land cover in the form of a map and diagram



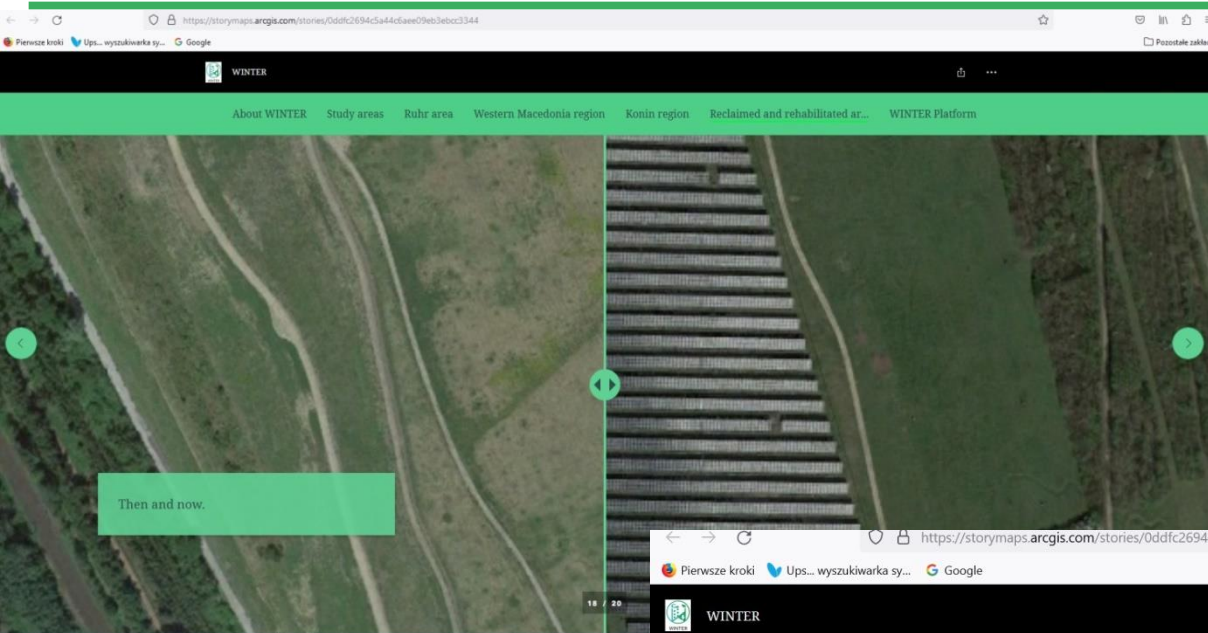
Funded by the
European Union



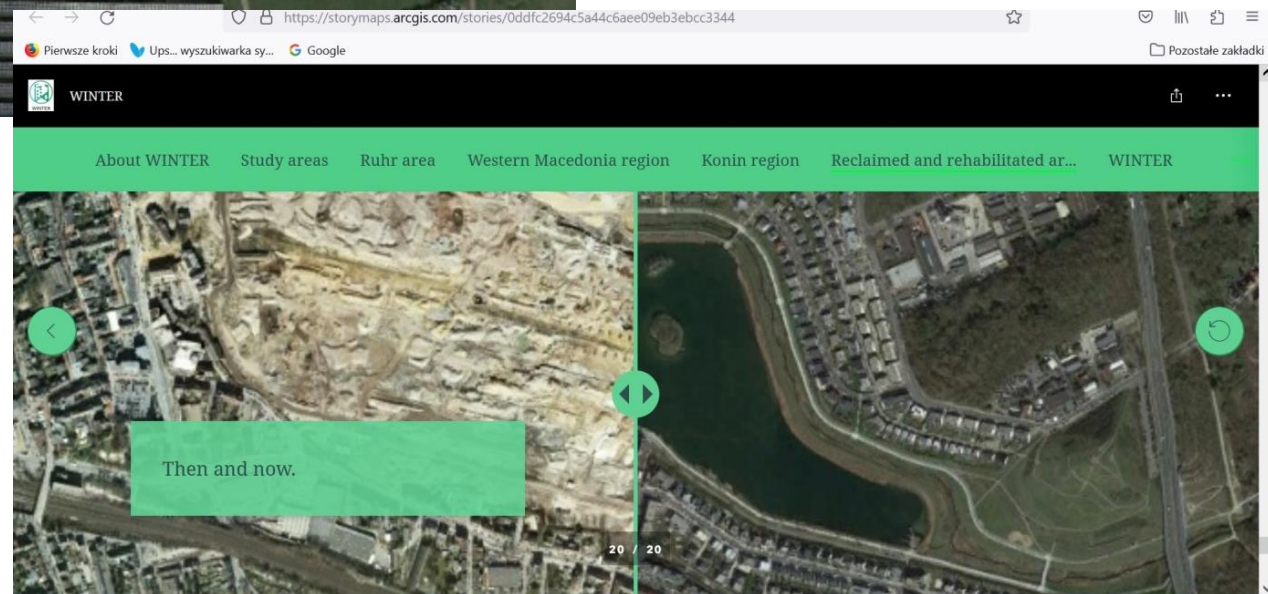
WINTER



polteqor – instytut
INSTYTUT GÓRNICTWA ODKRYWKOWEGO



„Than and now” - exemplary
sections illustrating the
transformations occurring in post-
mining areas.





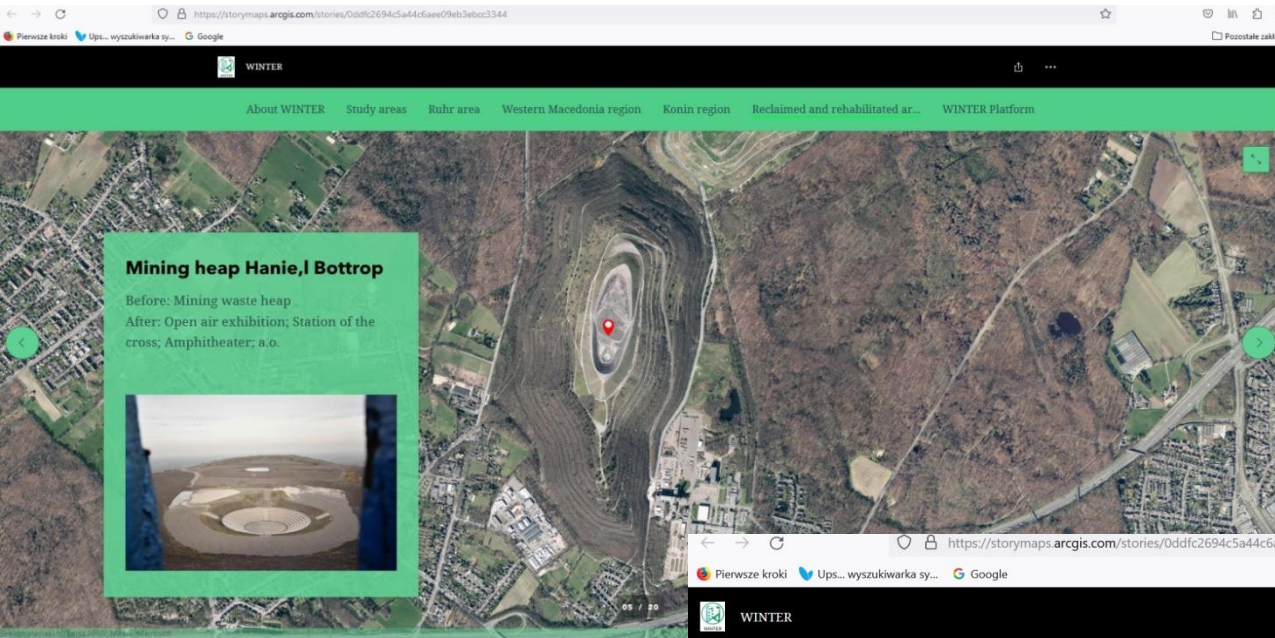
Funded by the European Union



WINTER

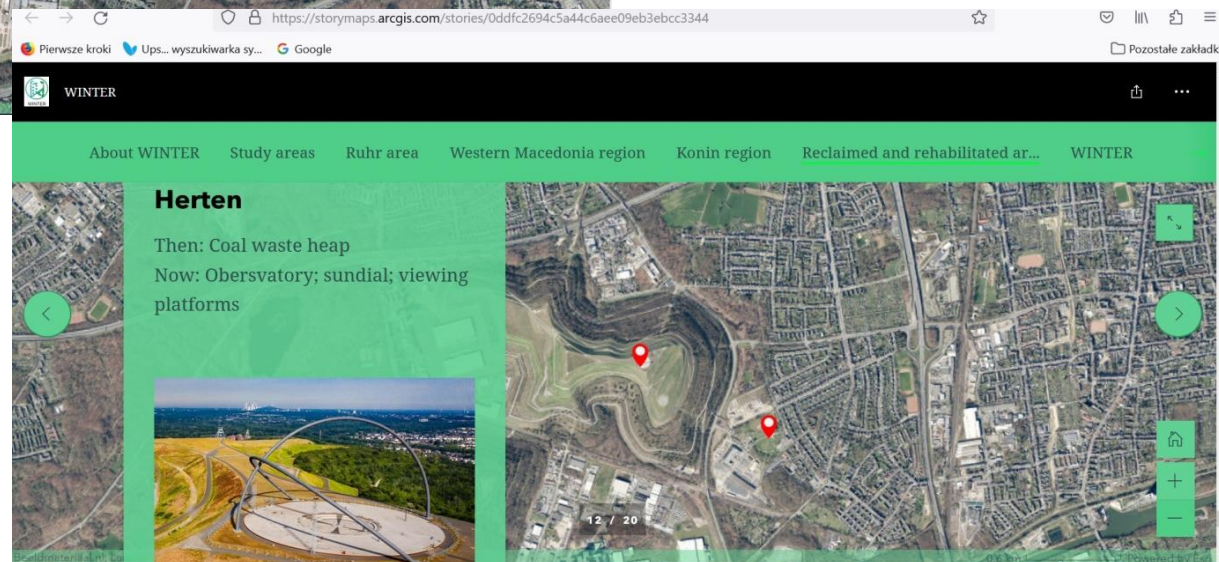


polteqor – instytut
INSTYTUT GÓRNICTWA ODKRYWKOWEGO



Reclamation of post-mining areas in the Ruhr area (Hanie, once a heap, today an amphitheater and a place for organizing outdoor events).

Reclamation of post-mining areas in the Ruhr area (Harten, once a heap, now an observatory).





Funded by the
European Union



WINTER



polteqor – instytut
INSTYTUT GÓRNICTWA ODKRYWKOWEGO

<https://winter-project.eu/>

The screenshot shows a web browser displaying the homepage of the WINTER project. The browser's address bar shows the URL <https://winter-project.eu/>. The page features a large background image of a lake and forest. In the top left corner, there is a circular logo with a factory and a leaf, and the text "WINTER RFCS Accompanying Measure". A navigation menu is located in the top right, with items: "Home", "About WINTER", "News & Publications", "WINTER Platform", and "Contact Us". The main heading "WINTER" is displayed in large white letters, with the subtitle "Web INTERactive management tool for coal Regions in transition" below it. On the right side, there are social media icons for Facebook, Twitter, and LinkedIn.

11th International Brown Coal Mining Congress, Bełchatów 17-19 April 2023



Funded by the
European Union



WINTER



polteqor – instytut
INSTYTUT GÓRNICCTWA ODKRYWKOWEGO

Thank you for your attention

Funded by the European Union, this presentation's views and opinions are solely those of the authors and do not necessarily represent the perspectives of the European Union or the Research Fund for Coal and Steel. Neither the European Union nor the funding body can be held responsible for the content presented.